

EN



Concorde

REISEMOBILE AUS LEIDENSCHAFT



LINER

COMPLETE EXCLUSIVITY.

We have invested all of our passion in developing this vehicle in the upper premium segment. The result is stunning: A technical masterpiece which gives you the space you need for your kind of travel, with furnishings which offer almost unbeatable comfort at the very highest level. All of this and much more make the Liner the best-selling motorhome in its class. Climb aboard and live your dream.



CONTENTS

4	LINER	
6	INTERIOR DESIGN	20
16	FURNITURE LINES	24
18	LEATHER AND FABRICS	26
		TECHNICAL FEATURES
		FLOOR PLANS
		PASSION



ROOM FOR LUXURY.
ROOM FOR **EXPANSION.**



Weighing more than 7.5 metric tons and measuring up to 11.50 meters in length and 2.50 meters in width – the majestic appearance of the Liner is an impressive sight for all to see. We have based the Liner upon the Mercedes Atego, which comes with a reliable 299 HP in-line six cylinder engine. The interior of the Liner is just as stunning, with a perfect combination of high-end furnishings and maximum use of space. Choose one of the three floor plans or let us know what room layout you prefer – we will make your dream of having your own customised premium vehicle a reality.







JUST NO FALSE **MODESTY.**

THE LIVING ROOM.

The exquisite interior design ensures travelling in a Liner will be an unforgettable experience. Surrounded by beautifully crafted superior quality materials you will enjoy an almost unbelievable level of comfort and luxury. As standard, the liner shines in the high-quality Jatoba Brilliant furniture look. Alternatively, the furniture look Jatoba Brilliant with roof cabinet furniture fronts is available in the colour combination "high gloss" Senosan cream white and Jatoba Brilliant. For a maximum in walking comfort, the floor coverings are available as standard in yacht-style or optionally in a slate look.



FOR CONNOISSEURS.

THE KITCHEN.

The U-shaped kitchen of the Liner is thought through down to the last detail. High-quality kitchen appliances, spacious cupboards and generous worktops fulfil the demands of even the most ambitious chef. And for those who prefer to let others do the cooking, simply delight in the sight of the fine décor.





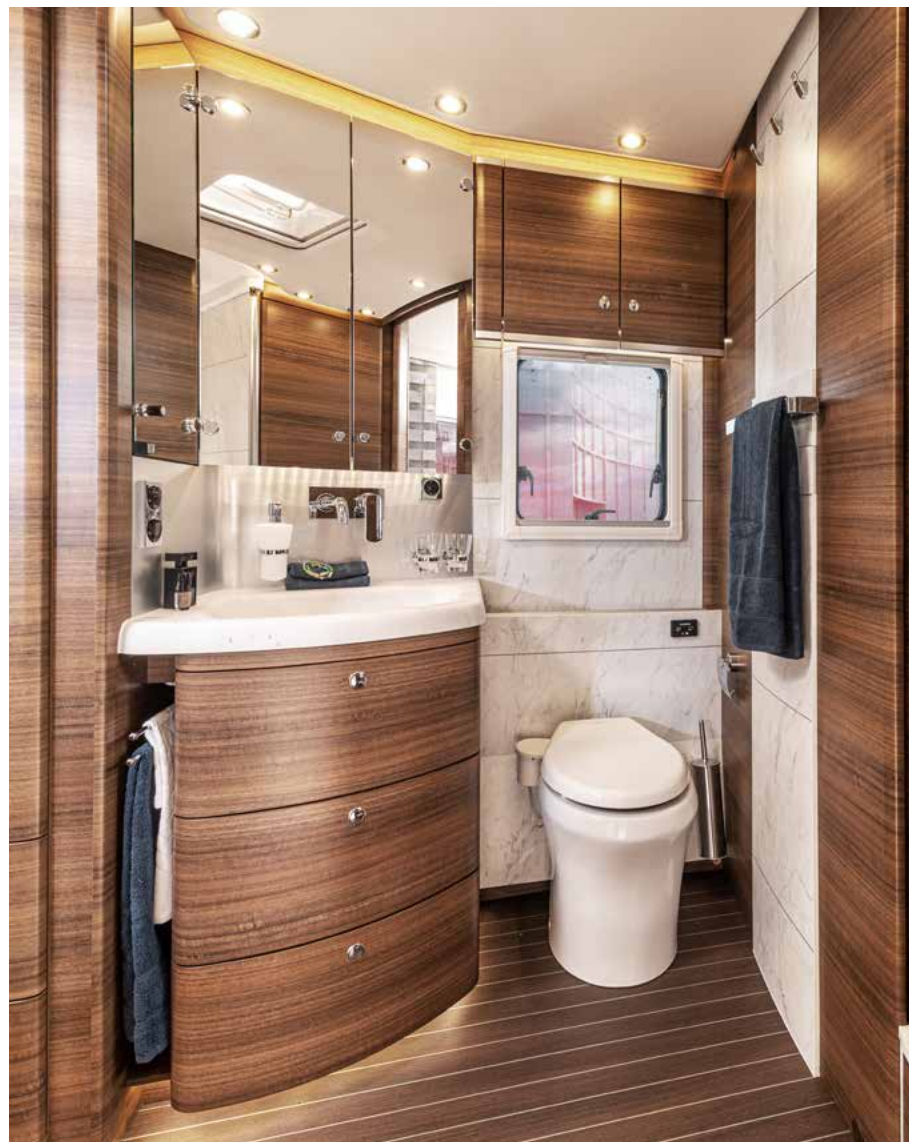




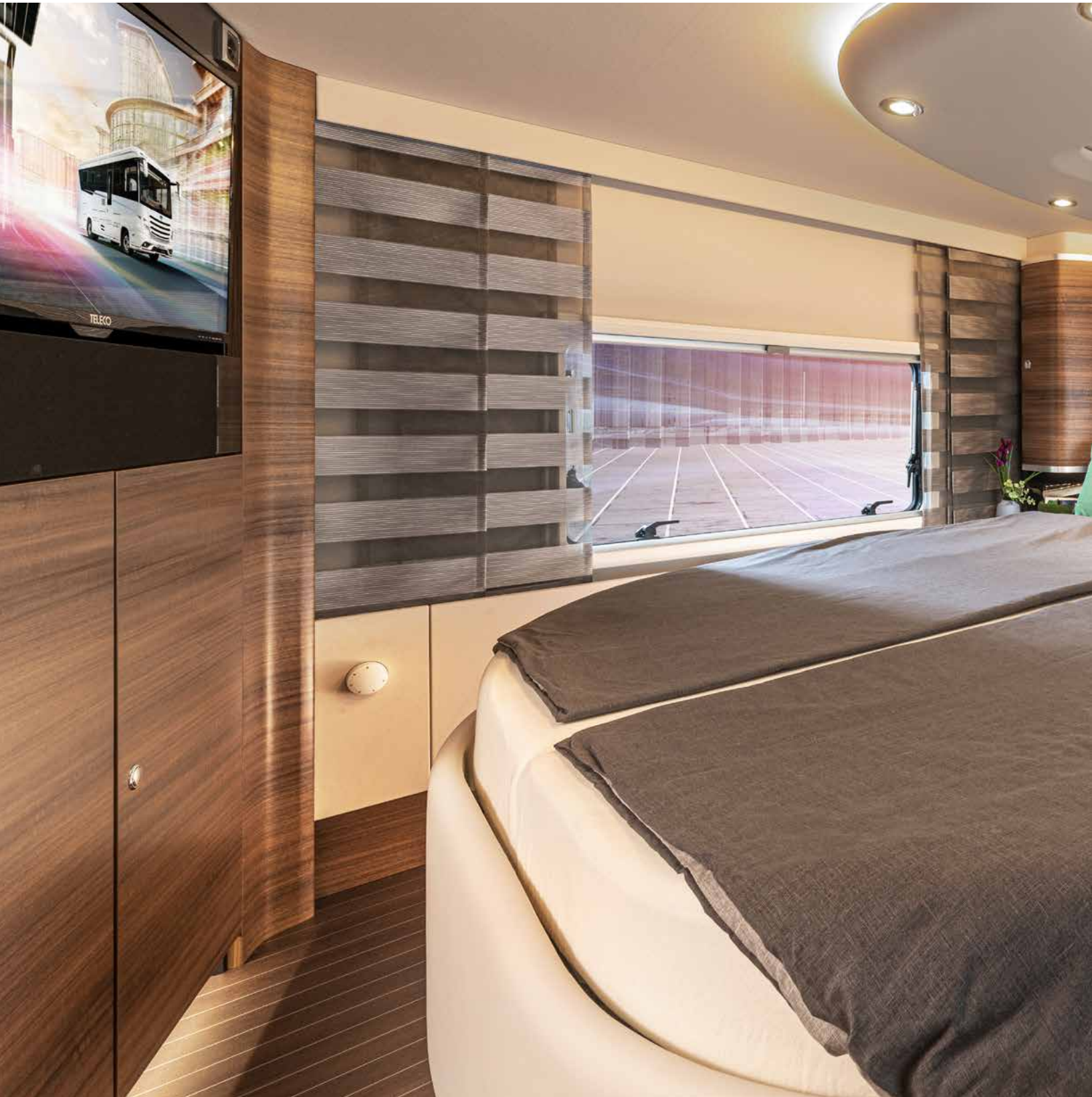
EVERYTHING **YOU COULD** POSSIBLY WANT.

THE BATHROOM.

The bathroom landscape of the Liner resembles that of a five-star hotel. High-quality fittings, a heated towel rail and the large shower all create a uniquely pleasant atmosphere. For a refreshing morning spa programme, for your home away from home.



OVERSIZED DREAMSCAPE.



THE SLEEPING SPACE.

The berths in the Liner are very generously sized. This also applies to the rear bed variant as well as the pull-down bed. The bed systems in the spacious rear come with high-quality cold foam mattresses and spring bases. For a wonderfully relaxing good night's sleep.



ENJOY **THE** VIEW.



THE DRIVER'S CAB.

The modern and functional dashboard is perfectly adapted to the driver's ergonomics. The optimally positioned controls, the raised seating position and the large bus mirrors provide a better overview and greater safety in traffic. The standard leather dashboard is integrated into the driver's cab and forms a harmonious unit with the newly designed transition to the living area.



SHOW STYLE THE FURNITURE LINES

JATOBA BRILLIANT FURNITURE LINE



THE DESIGN CONCEPTS.

Two different design concepts create gorgeous spatial experiences. The living area of the Liner is equipped standard with the exquisite Jatoba Brilliant furniture line. With these furnishings, the overhead locker furniture front panels have handle bars in stainless steel look. Alternatively, the overhead locker furniture front panels can be selected in Senosan creme white / Jatoba Brilliant. For a maximum in walking comfort, the floor coverings in the yacht style are perfectly matched to the respective furniture.

JATOBA BRILLIANT FURNITURE LINE, FURNITURE FRONT PANELS **A COMBINATION OF SENOSAN CREAM WHITE / JATOBA BRILLIANT**



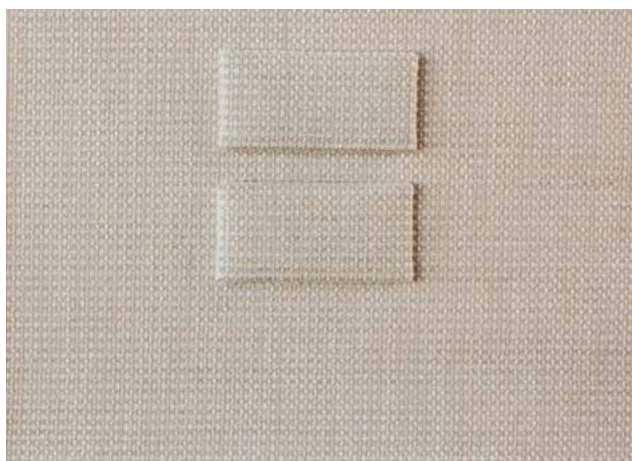
EXPRESSIVE **AND**
PERFECTLY COORDINATED.

VANILLA LEATHER UPHOLSTERY



LEATHER AND FABRICS.

We offer a large selection of different full leather and microfibre covers. All materials are finished with care in selected workshops in accordance with the strictest Concorde quality requirements. They are subjected to an innovative impregnating process so that they maintain their typical properties for as long as possible: Our microfibre fabrics are treated with ConLotus, our leather with Antisoiling Aquaderm X-Shield. Dirt does not stick, liquids roll right off, the look and smoothness stay the same.



MAXWELL FABRIC/MICROFIBRE UPHOLSTERY



CARAMEL FABRIC/MICROFIBRE UPHOLSTERY



CREME-BEIGE LEATHER UPHOLSTERY



SAVANNAH LEATHER UPHOLSTERY

THE STANDARD LINER **HIGHLIGHTS**

ACTIVE DASHBOARD

Attractive and practical – the active dashboard combines both. With gentle, ergonomic curves, it encloses the driver, providing him with an optimum view of the two monitor shafts to the left and right of the steering wheel and with perfect access to the numerous switches. The "ambiance lighting" with pleasant, indirect lighting and optical accents created by subtly luminous, matt circles of light conveys an exceptional ambiance.

FRONT ACCESS HATCH

Nice and tidy: The service and maintenance area is located behind the front access hatch. It provides easy access to all essential elements, such as water, oil and light bulbs so they can be easily checked, refilled or replaced.

ELECTRICAL COMPARTMENT / MASTERVOLT

The Mastervolt battery management system monitors the battery charging cycles, ensures perfect utilisation of the storage capacity and prevents deep discharge. The Mastervolt system supports the shore power if the mains connection is weak. It can be controlled by a well-organised operating unit.

CENTRAL WATER

The water compartment, which contains all important drain taps such as fresh water, grey water and the black water tank, is very accessible and neatly arranged. The practical outdoor shower is also located here.

SENSOR-TOUCH STORAGE SPACE FLAPS AND SKIRTING FLAPS

By eliminating the locks on the sensor-touch storage space flaps, they appear more harmonious and give the side wall a more tranquil appearance. The skirting flaps are likewise more elegantly integrated in the side profile of the Liner and are standard in all Liner models.

REAR SPOILER WITH INTEGRATED CAMERA AND LED STRIP

For an improved view to the rear, the reverse camera was integrated in the spoiler and, to ensure that no obstacles are overlooked in the dark, an LED strip was also included to improve lighting. With the spoiler, the rear of the vehicle appears even cleaner and more elegant.



ACTIVE DASHBOARD



FRONT ACCESS HATCH



ELECTRICAL COMPARTMENT / MASTERVOLT



CENTRAL WATER



SENSOR-TOUCH STORAGE SPACE FLAPS AND SKIRTING FLAPS



REAR SPOILER WITH INTEGRATED CAMERA AND LED STRIP



LIGHTING CONCEPT



LIVING AREA SOUND SYSTEM



REFRIGERATOR COMBINATIONS



COOK LIKE THE PROS



TOWEL RADIATOR IN BATHROOM



FORWARD-THINKING SAFETY

LIGHTING CONCEPT

A distinctive light design is at home here. The indirect lighting in the canopy, which illuminates the furniture, the front panels, the cabinets and makes the wood shine. Mounted below the wall cupboards is indirect lighting that perfectly illuminates the workspace in the kitchen. This continues all the way down to the base, which, with dimmable LED lighting, seems to make the furniture float.

LIVING AREA SOUND SYSTEM

The integrated sound system can be switched between the driver's compartment and the living room. As a result, the sounds is always in the right ear with the accustomed, perfect sound quality. All sound effects, paired with the exciting Sunday thriller, thereby become a real and unforgettable experience.

REFRIGERATOR COMBINATIONS

The advantage of the new refrigerator is that it can be opened from both sides: on the one side a chilled bottle can be conveniently taken out from the living area. And on the other, the cook can simply remove ingredients from the kitchen side. With the absorber model, a gas baking oven is installed, with the optional compressor model, a microwave. The right device is available for everyone.

COOK LIKE THE PROS

The kitchen makes it possible with its many practical details. With the lift, the coffee machine elegantly disappears into the overhead cabinet and is as fascinating as the retractable socket strip. The chef's delight is the integrated three-burner gas cooker which, like the gastro tap, is professional equipment.

TOWEL RADIATOR IN BATHROOM

The mineral composite wall radiator with the "Onyx Bianco" colour scheme ensures cosy warmth in the bathroom and a pleasantly heated towel. Combine this with the underfloor heating and the bathroom becomes an oasis of spa-like proportions.

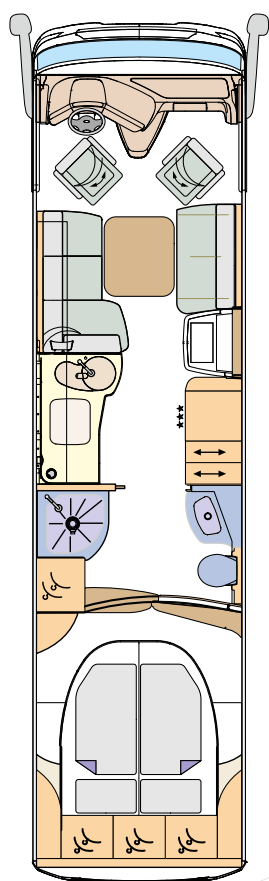
FORWARD-THINKING SAFETY

The emergency brake assistant and the lane departure warning system provided as standard ensure your safety. The radar system of the emergency brake assistant detects obstacles and intervenes if there is no driver activity, preventing serious accidents. The camera of the lane departure warning system helps the driver stay in the lane and warns him/her in a timely manner in the event that the lane is overrun.

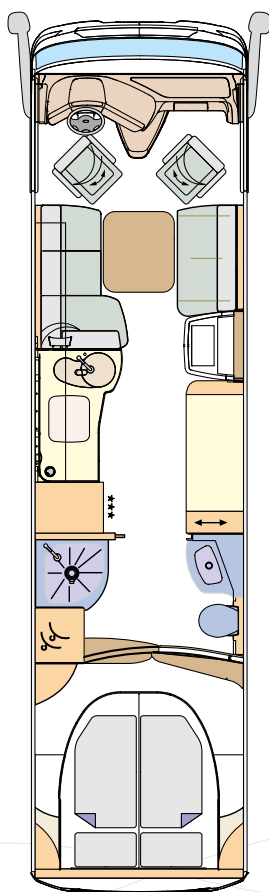
YOU HAVE THE CHOICE

THE FLOOR PLANS.

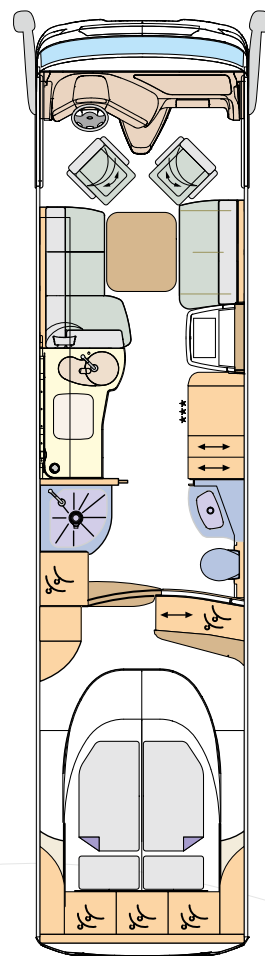
Select from two different lengths, each of which has either more storage space or a larger kitchen. What's more, our two Liner models come with a garage – for even more independence on the go. If you have any other individual requests, please get in touch.



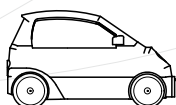
LINER 990 G.I.



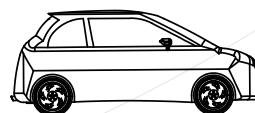
LINER 996 M.I.



LINER 1090 G.I.

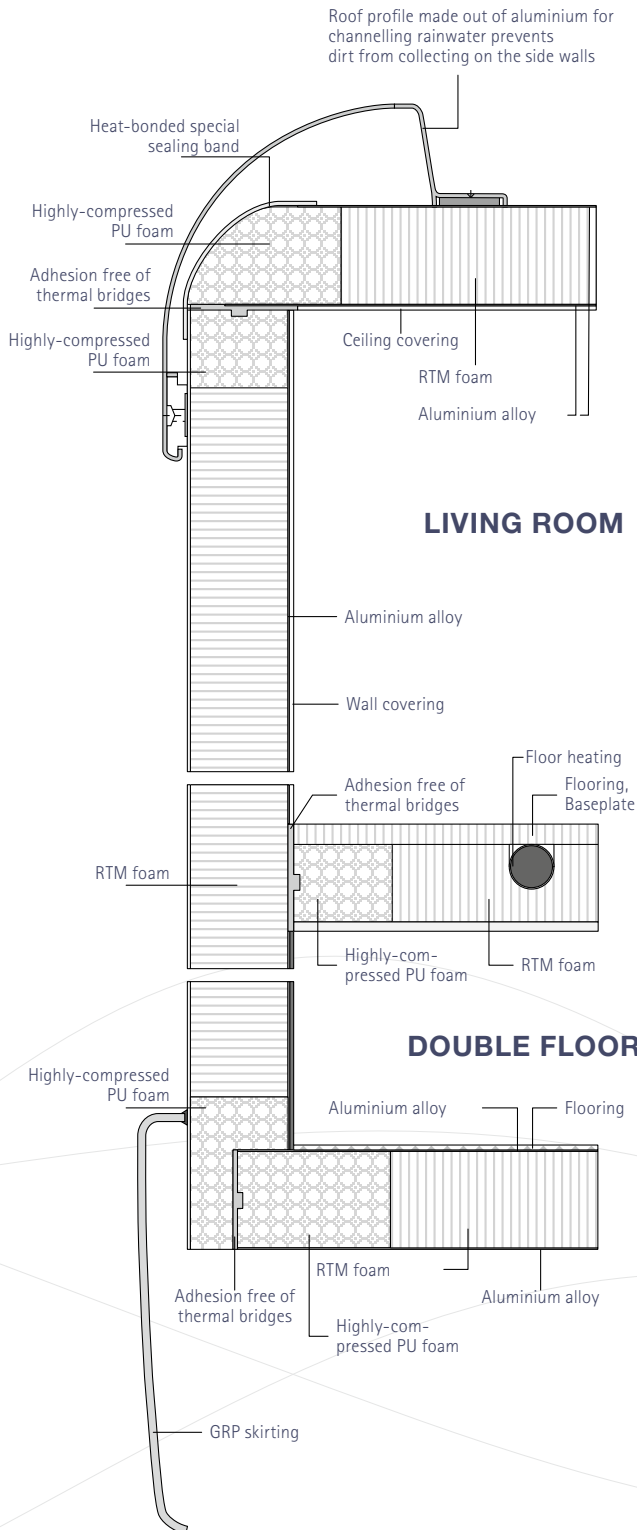


Smart 3



Fiat 500 (from 2009 model)
Mini Cooper SD

CABIN CONSTRUCTION OF THE CONCORDE LINER



When it comes to motorhome construction, Concorde stands for perfect insulation and excellent stability. The reasons for this are primarily the Solidtherm cabin construction, completely bonded and free of thermal bridges, with PU rigid foam strips as well as the side wall insulation with 38 millimetre-strong RTM foam.

But that's not all: The underbody and in-between floors are manufactured in a sandwich design and equipped with a total of 70 millimetres of insulation. Side coverings, bumpers and front and rear sections are also made of highly-stable yet elastic fibreglass composite material.

The high-gloss and level wall surfaces made of aluminium composite make for a high-quality automobile appearance. And to make sure it stays that way, the aluminium roof profile strips with the rainwater channels effectively reduce the collection of dirt on the side walls. A 10-year impermeability warranty against moisture ingress from outside for the body of the vehicle with annual check in accordance with the Concorde guarantee conditions.



WE ARE PASSIONATE **ABOUT** MOTORHOMES.

THE ESSENCE OF MOBILE TRAVEL.

Concorde is committed to thinking like a manufacturer. We manufacture motorhomes of the highest quality for the highest demands. Every vehicle is unique, every vehicle is a masterpiece, classically hand-crafted in a traditional Franconian company, with unwavering passion, enthusiasm and inspiration. Because a passion for motorhomes is what unites the people at Concorde. And it is that which unites us with you.





Concorde

REISEMOBILE AUS LEIDENSCHAFT

Presented by your Concorde dealer:

Concorde Reisemobile GmbH
Concorde-Straße 2-4 · D-96132 Schlüsselfeld-Aschbach (Germany)
Phone +49 (0) 9555 9225-0 · Fax +49 (0) 9555 9225-44
Internet: www.concorde.eu · E-mail: info@concorde.eu

All information and figures apply for Concorde motorhomes from model year 2021. Model programmes, technical data and equipment features can differ from country to country. The design is based on StVO (German Road Traffic Act) and StVZO (German Road Traffic Licensing Regulations). We reserve the right to make changes, even without advance notice. Your Concorde dealer would be happy to give you current information. Please note that vehicles with special equipment are pictured which can deviate from the scope of delivery and standard equipment.