

EN



Concorde

REISEMOBILE AUS LEIDENSCHAFT



CARVER DIAMOND SERIES

DIAMOND – EXTRA LUXURY

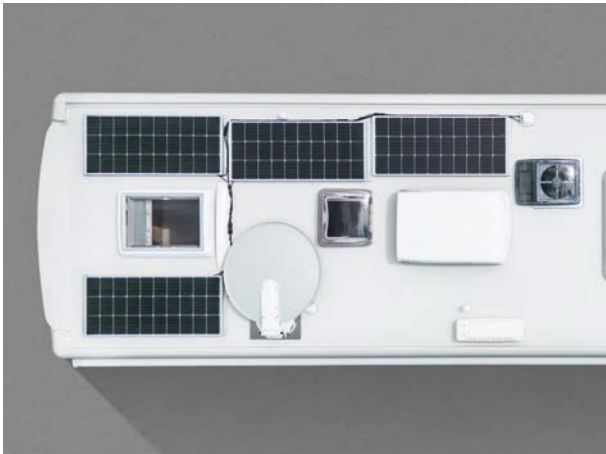
The special Diamond Series models are in a class of their own that pushes the bounds of possibility when it comes to design, comfort, functionality and luxury. A Diamond Series of the Carver models is now available as the latest addition to this extravagant edition, offering a standard premium package with luxurious facilities and equipment that leave virtually nothing to be desired.

Comprising almost 50 individual items, the Diamond Series package not only promises „high performance“ but also „the high life“, which will make even the most fastidious mobile travellers catch their breath.



DIAMOND SERIES – A BRILLIANT APPEARANCE

Impressive arguments in favour of the Carver Diamond Series include its attractive exterior with copper-coloured spear, decorative side panels, and the copper-coloured elements on the steering wheel, the central locking system with keyless access to the storage compartments and the 16-inch alloy wheels. Other important features include the hydraulic lifting support system with automatic levelling. The upgraded standard facilities and equipment of the models in the Diamond Series definitely put them in a class of their own.



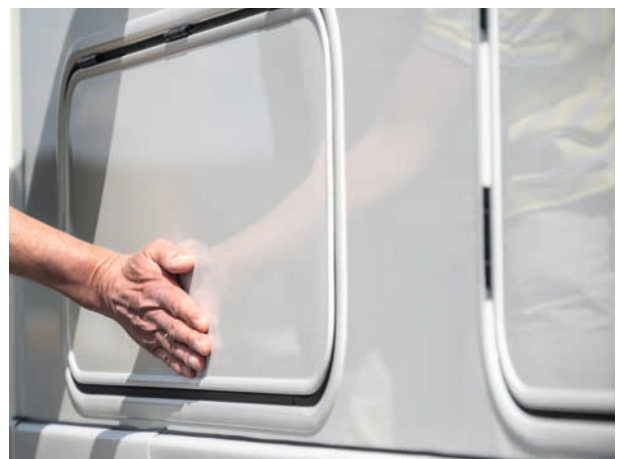
SOLAR PANELS WITH APPROX. 560 W MAXIMUM POWER



REMOVABLE COPPER/DIAMOND EDITION MULTI-FUNCTION LEATHER STEERING WHEEL WITH COPPER ELEMENTS



DIAMOND SERIES „VANILLA“ LEATHER UPHOLSTERY



CENTRAL LOCKING SYSTEM FOR STORAGE SPACE FLAPS WITH ELECTRIC OPENING VIA SENSOR



SPACIOUSNESS IS NOT A QUESTION OF SIZE

Spaciousness is not a question of size, but of intelligent design. A design that has enabled the creation of a living area, which gives the impression of being more than generously proportioned, within a very small space. Every room, from the bedroom, via the bathroom and kitchen, right through to the living area, is furnished in such a way as to create a pleasant feeling of unrestricted freedom of movement. A feeling that is supplemented by an extra touch of exclusivity in Diamond Series Carver models. This is accomplished by means of the Diamond Series „Vanilla“ leather upholstery, which was developed especially for the seat and couch areas, as well as for the seats in the driver's cab. The comfortable atmosphere is enhanced by the Jatoba Brilliant furnishing units and Senosan overhead compartment fronts with handle strips in a stainless-steel finish, and a brilliant lighting concept.



SPACE IN EVERY NOOK AND CRANNY

The interior design of the Carver follows an intelligent concept that uses every millimetre of available space. The Diamond Series kitchen is equipped with a 177-litre refrigerator and a microwave. The „Lithium“ electrical power package ensures that all electrical appliances, including the microwave, function smoothly even without a shore power supply.





UPGRADED STANDARD EQUIPMENT

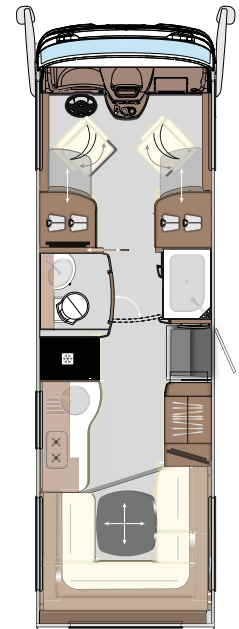
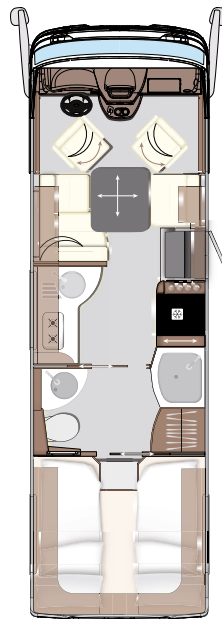
Chassis package II 70C (not for 920 G)	
Gross vehicle weight ratio 7,490 kg, (trailer load max. 3,000 kg), Differential lock for rear axle, Concorde front and rear axle package, Front and rear axle suspension, 4-channel+ system with "auto level" function, adapted rolling piston for the air bellows, chassis-optimised shock absorbers at the front and rear, ESP and hill holder, 16" light alloy wheels, front axle with wheel spacers / aluminium rear axle wheel covers	21.050,-
Chassis version Iveco Daily 70C (7,000 kg gross vehicle weight) (Series 890 RRL, 920 G)	3.085,-
Engine option 1 Iveco Daily C21 (Euro VI e), displacement 3.0 l, 152 kW (207 hp), torque 470 Nm	3.590,-
ZF converter automatic transmission	6.925,-
Comfort and safety package	
- Adaptive cruise control (ACC) with traffic function	
- AEBS emergency brake assistant with City-Brake pro	
- Active lane departure warning system with buzzer	
- Rain/light sensor	7.590,-
Hydraulic supporting jacks with automatic levelling	10.785,-
Bi-LED main headlights including LED daytime running lights, fog lights and static cornering lights integrated into the front bumper	2.420,-
Concorde multi-function steering wheel in leather, removable (Copper/Diamond Edition)	2.405,-
Fuel tank, 120 l	895,-
Active tyre pressure monitoring system	785,-
Dual-tone compressed air horn	1.270,-
Ambience Style package	
Furnishings in Jatoba Brilliant with roof cabinet fronts in "high gloss"	
Senosan cream white with handle bars in stainless steel look	
External decor in "Centurion Style" including decals	
Windows with tinting in privacy black	
Blinds in living room with wood look	
Soft-Walk floor covering in yacht-style	7.385,-
Central locking system for storage space flaps with electric opening via sensor, Storage space flaps with gas pressure springs and without recessed grips (without skirting flaps, gas locker door and garage door with G models)	5.920,-
6.0 m side wall awning, electric (850 L, 890 RRL, 920 G)	3.365,-
LED side wall lighting beneath the awning	1.125,-
LED rear wall lighting	1.125,-
LED lighting for storage areas in the double floor	760,-
Front mirror right and left for external coach mirror	715,-
External coach mirror in Centurion-style, painted white	790,-
Dashboard and dashboard cover in faux leather, bi-colour "Vanilla / Terra" upholstery (Series 791 RL/890 RRL)	975,-

Pull-out and lowerable table with upholstered table cover	1.365,-
Midi-Heki instead of Mini-Heki (living room)	970,-
177 l refrigerator / microwave combination instead of standard 177 l refrigerator	1.935,-
Electronic power package „Lion-Lithium-Power“	
1 x 200 Ah lithium battery (instead of series body batteries), combination charger 150 A, sine wave inverter from 12 V to 230 V, 6000 W peak and 3000 W continuous output with network compensator	7.950,-
Solar panels with approx. 560 W maximum power	3.835,-
Satellite TV system with 32" LED flat screen in right roof cabinet, electrically lowerable (850 L, 920 G)	
Satellite TV system with 85 cm mirror, fully automatic alignment, multiple-subscriber configuration by means of TWIN-LNB, connection for second receiver with 12 V and antenna socket in bedroom, audio supplied via radio system (total vehicle height plus approx. 120 mm)	8.090,-
Full HD 24" LED Smart TV for the rear sleeping area with integrated TV tuner (790 L, 850 L, 920 G)	1.290,-
Sound system (2 x 2-way speaker system in driver's cabin, 2 x 2-way speaker system in the living room, sub-woofer, sound processor)	1.820,-
Navigation system (with motorhome software and 10" touchscreen, integrated radio with DAB+ and hands-free module for telephone with Bluetooth)	4.200,-
Acoustic package for rear bedroom (790 L, 850 L, 920 G)	
(2 x 2-way speaker system and 4-channel amplifier for sound optimisation of LED flat screen)	1.185,-
Freshwater and wastewater tank, approx. 320 l each (wastewater tank 920 G 300 l)	1.375,-
SOG comfort toilet ventilation with activated carbon filter for fixed tank (extraction at toilet bowl)	490,-
Engine heat exchanger that uses the engine's cooling water to heat the living room	1.640,-
2-zone floor heating, can be regulated separately (living room, bathroom)	3.725,-
Mirrored cabinet in- and outside	230,-
Diamond Series „Vanilla“ leather upholstery	6.990,-
Trailer coupling with max. 3,500 trailer load (depending on selected load)	
(can only be delivered if mounted at the factory)	3.145,-
Luxury driver's cab suspension seats, air suspension with lumbar supports, air conditioning function and seat heating	6.210,-
Birdview 4-camera panoramic vision system	3.785,-
2400 W roof air conditioning with 1700 W heating element (total vehicle height plus 130 mm)	4.290,-
Commitment charge including full series fuel tank and Adblue tank	725,-
Value of the upgraded Diamond Series standard equipment	148.205,-

Example Carver Diamond Series 850 L

Carver 850 L	270.200,-
Total price	418.405,-
Carver Diamond Series 850 L	379.500,-
Your price advantage	38.905,-

TECHNICAL SPECIFICATIONS



CARVER DS 790 L

CARVER DS 791 RL

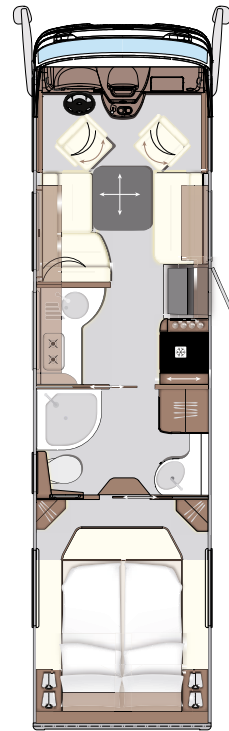
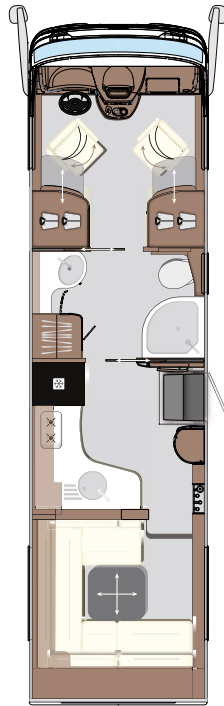
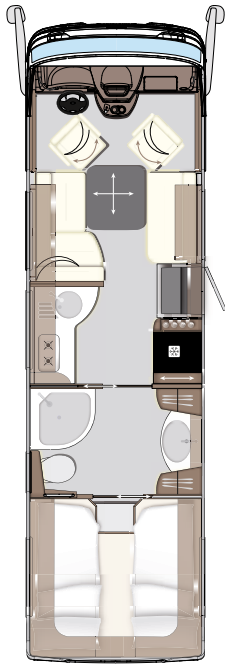
BASIC VEHICLE	Iveco Daily	Iveco Daily
CHASSIS TYPE	65C18	65C18
ENGINE (Euro VI e)	4-cylinder	4-cylinder
ENGINE CAPACITY	3,0 l	3,0 l
OUTPUT	129 kW (175 hp)	129 kW (175 hp)
TORQUE	430 Nm	430 Nm
OVERALL LENGTH (mm)	7995	8085
OVERALL WIDTH (mm)	2400	2400
OVERALL HEIGHT (mm)	3460	3460
WHEEL BASE (mm)	4350	4350
GROSS VEHICLE WEIGHT RATIO (kg)	6500	6500
MASS IN RUNNING ORDER (kg)	5255	5180
PAYLOAD (kg)	1245	1320
TRAILER LOAD BRAKED (kg)	3500	3500
SEATS WITH THREE-POINT SEATBELT	3 / 4	2 / 4
LEFT SITTING AREA (mm)	1255 / 890	–
RIGHT SEAT (mm)	700 / 650	–
REAR BED (mm)	2 x 2000 / 845	–
REAR SITTING AREA	–	2000 / 1600
PULL DOWN BED DIMENSIONS (optional in 791 RL and 890 RRL series) (mm)	2000 / 1350	2 x 2000 / 830
HEIGHT ABOVE PULL DOWN BED (mm)	860	970
RIGHT GARAGE DOOR, H / W (mm)	1250 / 1150	1070 / 1150
LEFT GARAGE DOOR, H / W (mm)	1250 / 1150	1070 / 680
REAR FLAP H / W (mm)	–	–
PRICE IN EURO INCLUDING 19% VAT	41.750,-	41.970,-

YOU SAVE
41.750,-

369.900,-

YOU SAVE
41.970,-

369.900,-



CARVER DS 850 L

CARVER DS 890 RRL

CARVER DS 920 G

Iveco Daily	Iveco Daily	Iveco Daily
65C18	70C18	70C18
4-cylinder	4-cylinder	4-cylinder
3,0 l	3,0 l	3,0 l
129 kW (175 hp)	129 kW (175 hp)	129 kW (175 hp)
430 Nm	430 Nm	430 Nm
8590	9085	9450
2400	2400	2400
3460	3460	3460
4750	5100	5100
6500	7200	7490
5280	5445	5585
1220	1755	1905
3500	3300	2500
3 / 4	2 / 4 ¹	3 / 4
1450 / 890	–	1450 / 890
1170 / 650	–	1170 / 650
2 x 2000 / 845	–	2000 / 1570
–	2000 / 1350 / 830	–
2000 / 1350	2 x 2000 / 830	2000 / 1350
860	970	860
1250 / 1150	1070 / 1150	–
1250 / 1150	1070 / 680	–
–	–	1500 / 1650
YOU SAVE 38.905,-	YOU SAVE 37.745,-	YOU SAVE 49.350,-
379.500,-	378.900,-	409.950,-

¹ 2 x lap belts in the seat against the driving direction



Concorde

REISEMOBILE AUS LEIDENSCHAFT



Concorde Reisemobile GmbH
Concorde-Straße 2-4 · D-96132 Schlüsselfeld-Aschbach (Germany)
Phone +49 (0) 9555 9225-0 · Fax +49 (0) 9555 9225-44
Internet: www.concorde.eu · E-mail: info@concorde.eu

All information and figures apply for Concorde motorhomes from model year 2025. Model programmes, technical data and equipment features can differ from country to country. The design is based on StVO (German Road Traffic Act) and StVZO (German Road Traffic Licensing Regulations). We reserve the right to make changes, even without advance notice. Your Concorde dealer would be happy to give you current information. Please note that vehicles with special equipment are pictured which can deviate from the scope of delivery and standard equipment.

Version: 08/2024